



佛教慈濟醫療財團法人
花蓮慈濟醫院
Hualien Tzu Chi Hospital,
Buddhist Tzu Chi Medical Foundation



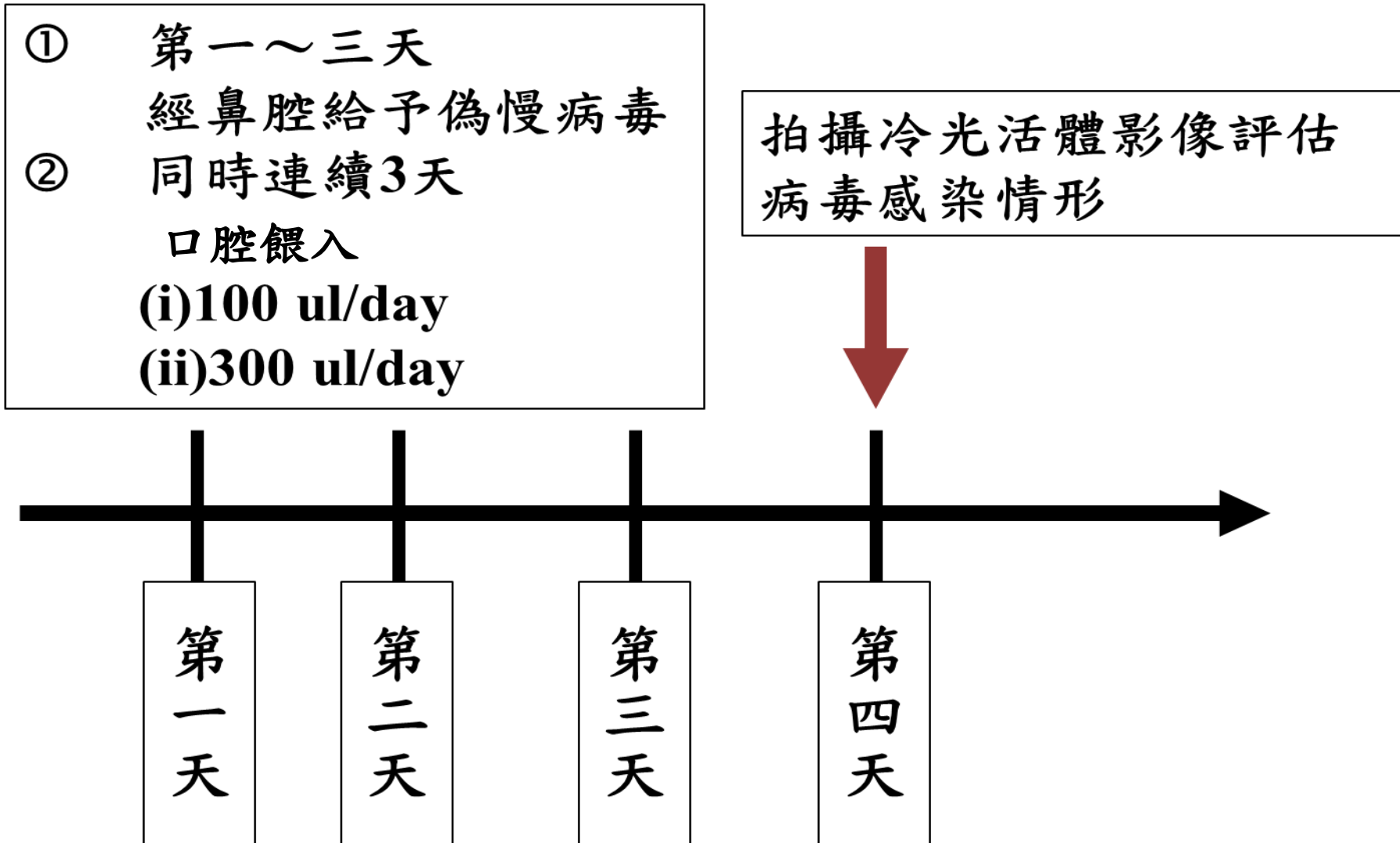
評估酵素漱口水、酵素口腔噴霧 (宏潤生技) 抗COVID-19應用

20 Apr. 2022

花蓮慈濟醫院 心血管暨粒線體相關疾病研究中心

Cardiovascular and Mitochondrial Related Disease Research Center, Hualien Tzu Chi Hospital

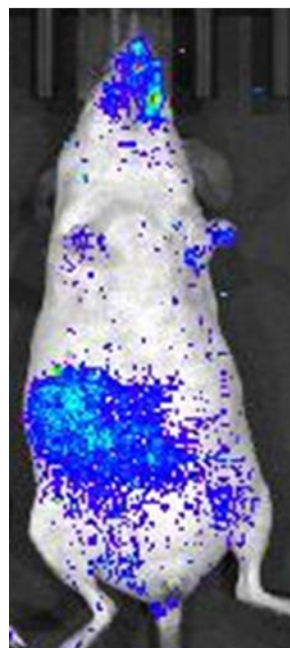
『動物模型』評估病毒感染試驗



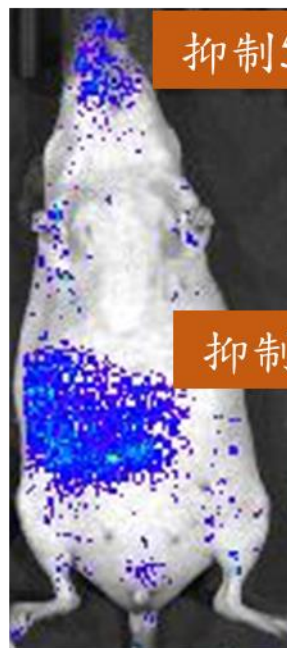
酵素漱口水可減少Omicron新冠病毒含量



Control



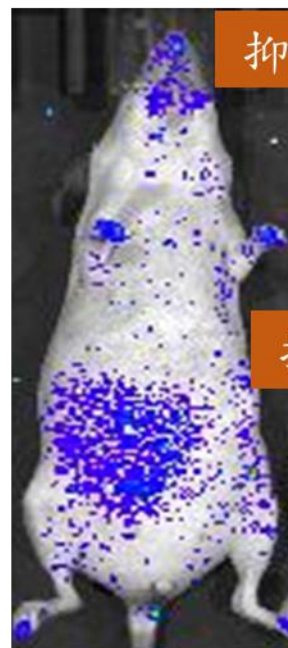
漱口水 100ul



抑制50%

抑制30%

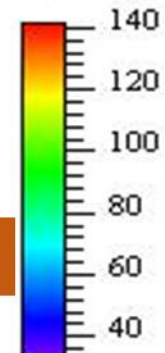
漱口水 300 ul



抑制65%

抑制60%

Luminescence



Counts

Color Scale
Min = 34
Max = 142



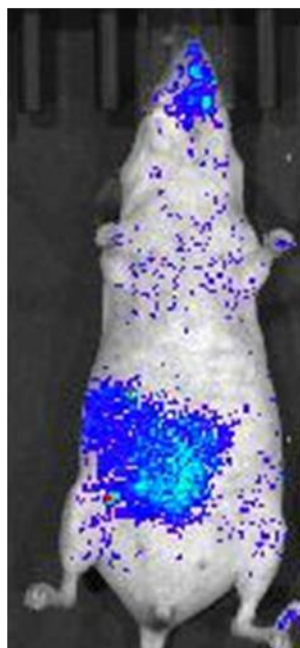
冷光活體影像系統

酵素口腔噴霧可減少Omicron新冠病毒含量

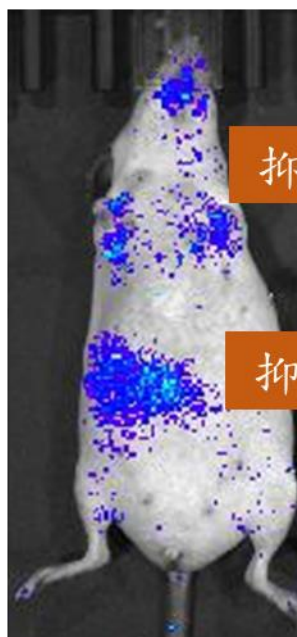


冷光活體影像系統

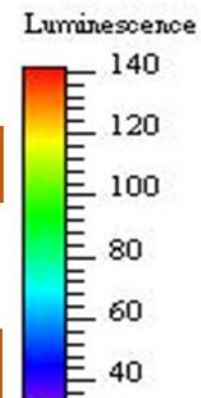
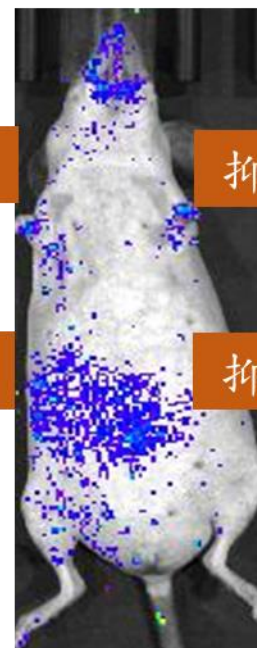
Control



噴霧 100ul



噴霧 300 ul



Counts

Color Scale
Min = 34
Max = 142

酵素漱口水及噴霧具抑制Omicron病毒感染能力



- 酵素漱口水可減少Omicron新冠病毒約65%感染效果



- 酵素噴霧可減少Omicron新冠病毒約75%感染效果

評估銀杏果蟲草（宏潤生技）之醫療應用

20 Apr. 2022

花蓮慈濟醫院 心血管暨粒線體相關疾病研究中心

Cardiovascular and Mitochondrial Related Disease Research Center, Hualien Tzu Chi Hospital